

Initiatives for the defense and protection of agricultural space: the cases of the agrarian parc of Fuenlabrada and the legislative proposal of protection of soils of high agroecological value and of soils of agricultural interest.

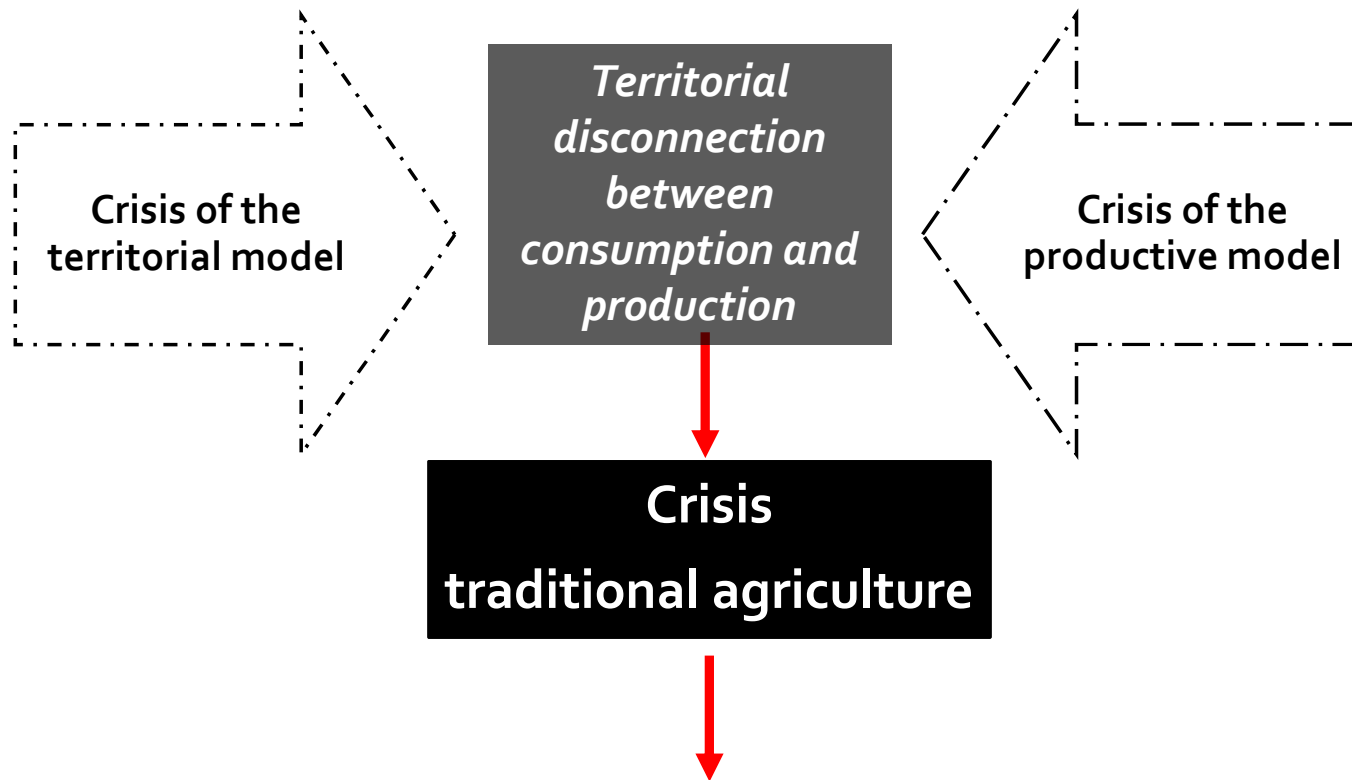
Workshop “Participatory approaches for territorial cohesión”

26th november-Granada

Carolina Yacamán Ochoa

cyacaman@ucm.es

We contextualize the problem: the dispossession story



It is essential to protect the fertile soils so that the agriculture can survive, thus ensuring production embedded in the territory.

LEGISLATIVE PROPOSAL OF PROTECTION OF SOILS OF HIGH AGROECOLOGICAL VALUE AND OF SOILS OF AGRICULTURAL INTEREST



ESPECIFIC OBJECTIVES OF THE LAW

1. Establish a legal system of protection for the Soils of high agrological value (SAVA) and the soils of agrarian Interest (SIA) applicable in general throughout the State, respecting in any case the competencies defined in the law for the autonomous communities and municipalities. In this sense, the law would have the character of basic state legislation.
2. Establish normative provisions and direct application criteria that guarantee the active conservation of the SAVA and the SIA and their multiple values.
3. Define specific figures of protection, planning and territorial management of the areas of interest in which the SAVA and the SIA are identified.
4. Contribute to the viability and maintenance of small and medium-sized farms that develop their activity in soils considered of SAVA and SIA.

ESPECIFIC OBJECTIVES OF THE LAW

5. Avoid the pressures derived from urban expansion, infrastructure development and any other that affects the artificialization of the soil; These include sealing, fragmentation caused by the passage of road infrastructure, or the change in use.
6. Promote ecological production, differentiated and quality production, so as to reduce the negative impacts generated by industrial agriculture on the environment, and on the health of consumers and producers.
7. Contribute to stop rural depopulation and abandonment of professional agricultural activity in a special way in the spaces subject to protection derived from the object of this law.
8. Improve the channels of participation to ensure decision-making by the owners of farms, professional agricultural organizations and cooperatives in the advisory bodies of public administrations.
9. Establish measures to guarantee the incorporation of young people and women in the agricultural activity.

PROTECTION AND MANAGEMENT FIGURES

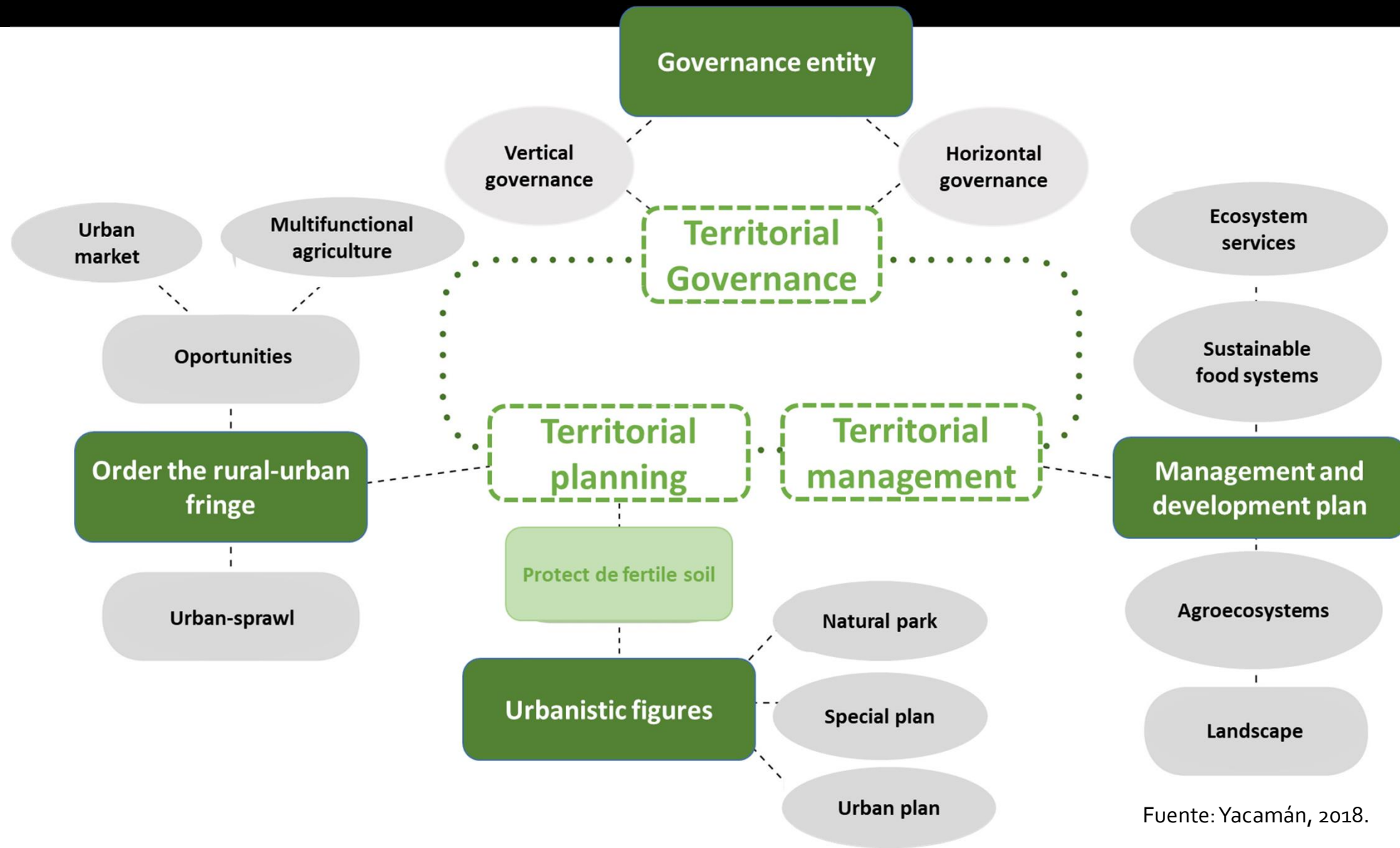
NATIONAL MANAGEMENT INSTRUMENTS

- **State Inventory of Soils of High Agrological Value and Land of Agricultural Interest**
- **State Soil Conservation Strategy**
- **State Commission for Soil Conservation**

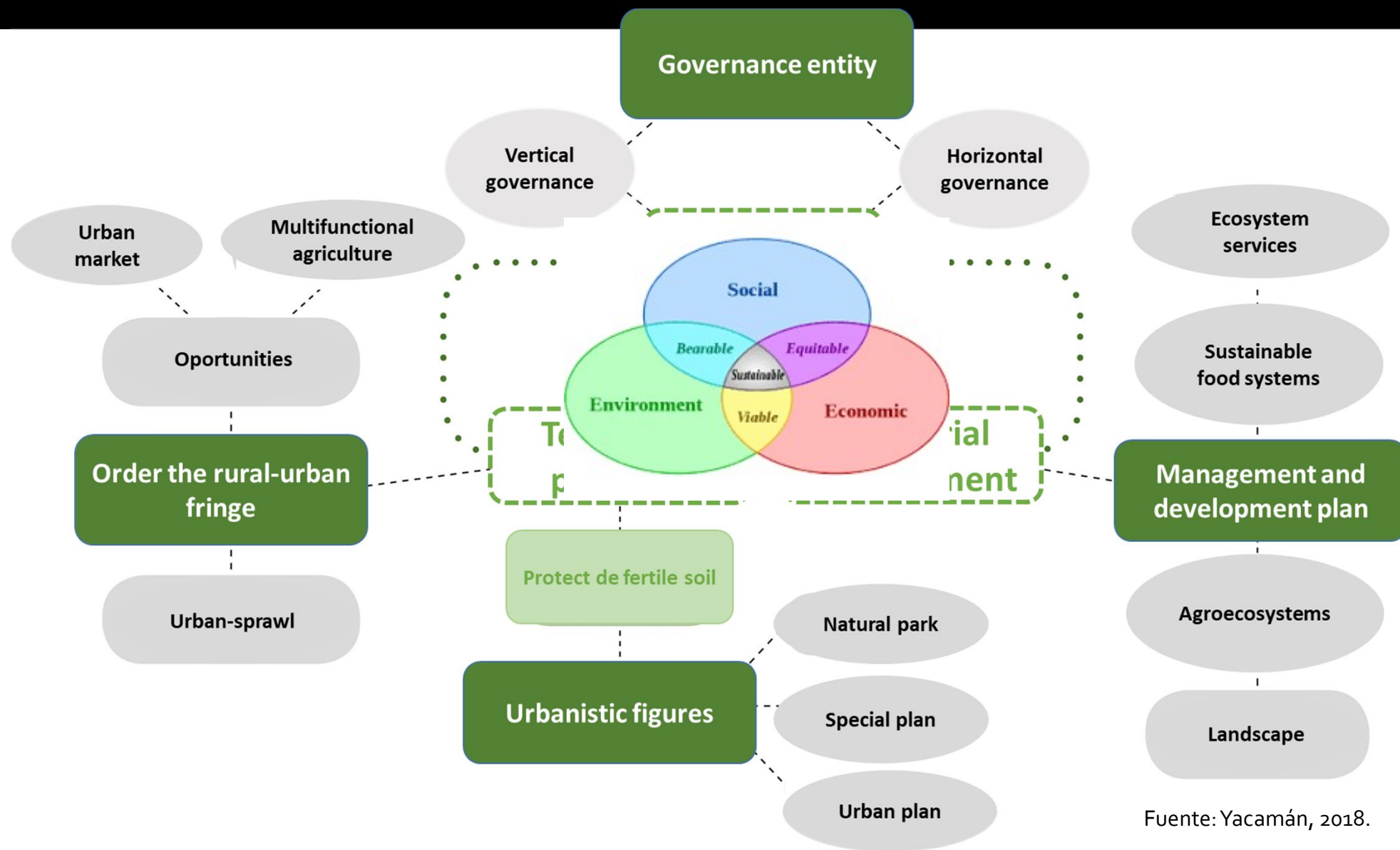
FIGURES FOR AGRICULTURAL SPACE MANAGEMENT

- **Agrarian parks**
- **Others**

The structure of the agrarian park is based on three tools



The structure of the agrarian park is based on three tools





Parque Agrario
de Fuenlabrada

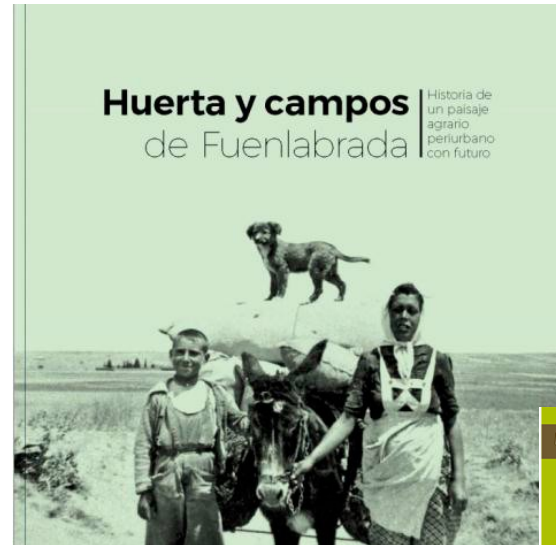
www.parqueagrariofuenlabrada.es

The objective of this project is to stimulate and support the local agricultural sector, and restore the link between the countryside and the city through the landscape.

Participatory approach for historical reconstruction of the agricultural landscape with the aim to territorialize the local agri-food system



Photo exhibition held at the town hall in 2015 with photographs provided by neighbors and by the municipal archives.



Yacamán y Mata, 2017.



Ruta interpretativa del paisaje

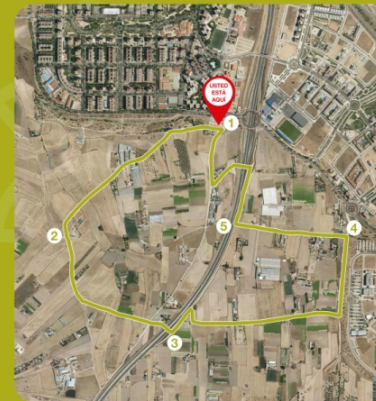




Peri-urban Agrarian Landscape as an educational and leisure resource



Itinerario



Ruta del Parque Agrario



- Longitud: 5 km
- Duración aproximada: 60 min
- Dificultad: fácil

Disfruta del Parque Agrario y su paisaje a través de un sencillo recorrido para transitar paseando, comiendo o en bici.

A lo largo de la ruta encontrarás varios paneles con información relacionada con el entorno que te permitirá conocer y apreciar los valores de este Parque. Su historia, su paisaje y su contexto hacen de este lugar un enclave singular en la región.

Recuerda respetar la actividad agraria y los cultivos durante el recorrido.

PANELES INFORMATIVOS

- Parque Agrario
- Historia
- Paisaje Agrario
- Patrimonio Agrario
- Servicios de los alrededores



Descárgate la ruta en www.parqueagrariofuenlabrada.es/vivir-sano/



Improve food security and nutrition



Parque Agrario
de Fuenlabrada



Support local economy



Parque Agrario
de Fuenlabrada





Gracias

