

Cultural heritage in danger, a resource for the communities

The participation as opportunity to built the community resilience in
after earthquake and over-industrialized Italian small towns.

The contribution of institutions.

Paola Branduini



POLITECNICO
MILANO 1863

Department of architecture, built environment
and construction engineering

Mauro Fazio

Anna Caterina Carli



Ministero dello
Sviluppo Economico

Introduction_the state of the art_the demand

- In Italian small towns, urban and rural heritage is strictly linked
- Cultural heritage (tangible and intangible) is in danger:
 - by repetitive disruptive events (earthquakes)
 - By continuous construction of new infrastructures (highways).
- Cultural identity of that communities of Italy is in danger
- **Are the institutional initiatives useful for helping people recovery?**

Norcia, central Italy

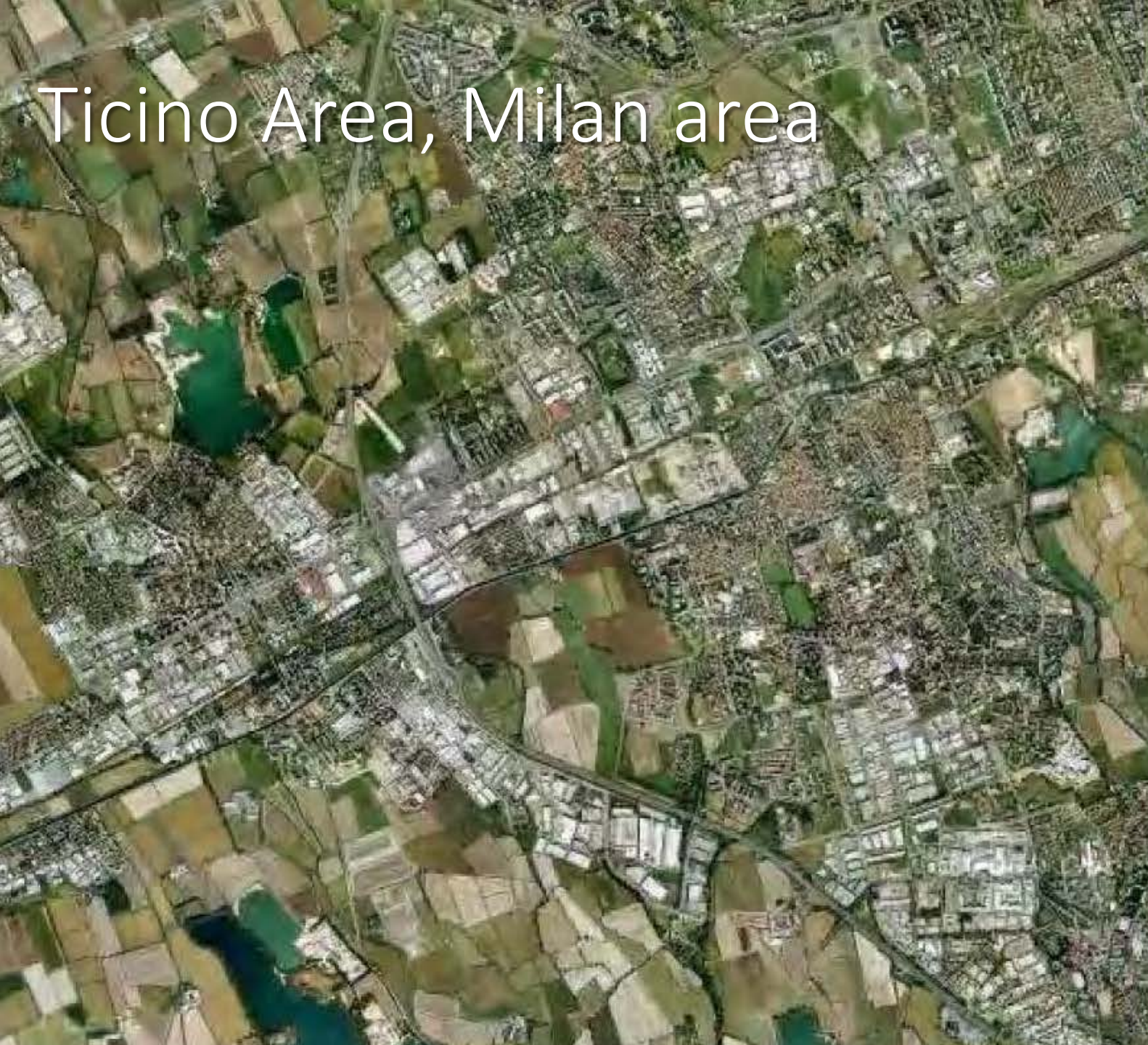


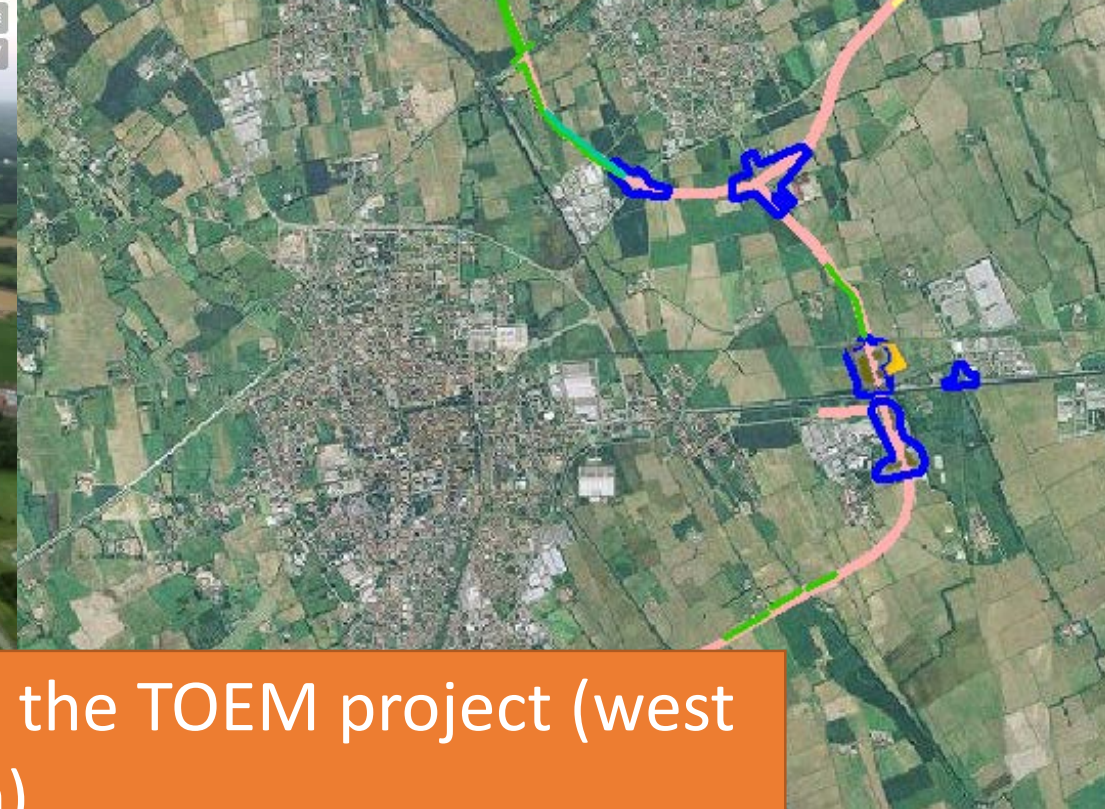


Castelluccio di Norcia, Before and after the earthquake

▶ ▶ 🔊 3:57 / 5:46





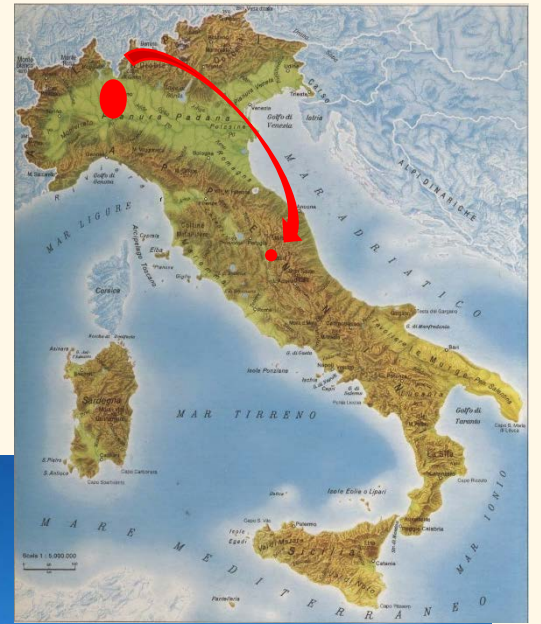


Abbategrasso and Albairate town and the TOEM project (west esternal peripheral highway of Milan)



ALTRI VIDEO

The linkmarcita meadow, historic agrarian landscape,
a rural heritage



Ticino_The Morimond Abbey



Norcia_San Benedetto Monastery

Research questions

- What is the inhabitant's perception about their urban and rural landscape heritage before and after a traumatic event (earthquake) or a landscape change?
- How far the legacy to their local identity helped people to recovery?
- How the people participation in cultural heritage preservation help the community to consolidate and create new jobs/innovate the job?
- What is the idea of cultural heritage that people have? Is it only the tangible one or is it also the intangible heritage? Does the heritage perception include both heritage inside and outside the village? Is the agricultural heritage considered and how?
- Does the preservation idea hold by institutions (Municipality, Ministry of Culture, and Ministry of Economy) correspond to the people idea? Do they attribute the same values to cultural heritage?
- What is the people perception about tourism as a leverage for the earthquake/landscape change recovery?

Aim

- preserve and enhance the tangible and intangible cultural heritage of these two areas of Italy
- help restoring and maintaining the rich cultural identity and values connected to tangible and intangible culture.
- understand if the cultural identity was/is the binding factor on these communities for recovering from the consequences, both social and economic, of the earthquakes and from infrastructure construction

Institutional Partners involved

EARTHQUAKE SMALL TOWNS

Regional park

Monti Sibillini Park, ing. Carlo Bifulco

Town Mayors

- Norcia, dott. Nicola Alemanno
- Preci, dott. Pietro Bellini
- Trevi, dott. Bernardino Sperandio

Documentation centers

CEDRAV

Ecomuseum of the Umbrian Apennine ridge/Valnerina

Others stakeholders

Sviluppumbria

Bianconi ospitalità

SMALL TOWNS IN OVER INDUSTRIALIZED AREAS

Regional park

Ticino valley Park, dott. Michele Bove

Parco Agricolo Sud Milano

Town Mayors

- Abbiategrasso
- Albairate, dott. Giovanni Pioltini (?)
- Rosate, dott. Daniele Del Pace (?)

Documentation centers

Abbiategrasso library

MUSA Landscape and taste museum and workshop

Others stakeholders

DINAMO agricultural district

Institutional Partners involved: MUSA Landscape and taste museum and workshop



2015
Zibido San Giacomo



Temporary exhibition



Multimedia exposition



Library



Professional kitchen



Discovering the
producers of agrarian
landscape outside the
museum...



Methodology

*Following research methodology of small town pilot action
In order to compare results*

1. Data collection

In order to save and promote cultural heritage related to agriculture, typical local food, traditional events, etc
census of initiatives promoted by both local institutions and private stakeholders and involving population

- For Norcia: after 1979 earthquake, then after 1997 (that damaged also Norcia) and after 2016
- For Ticino: from '70 until 2018

2. Community perception (questionnaire)

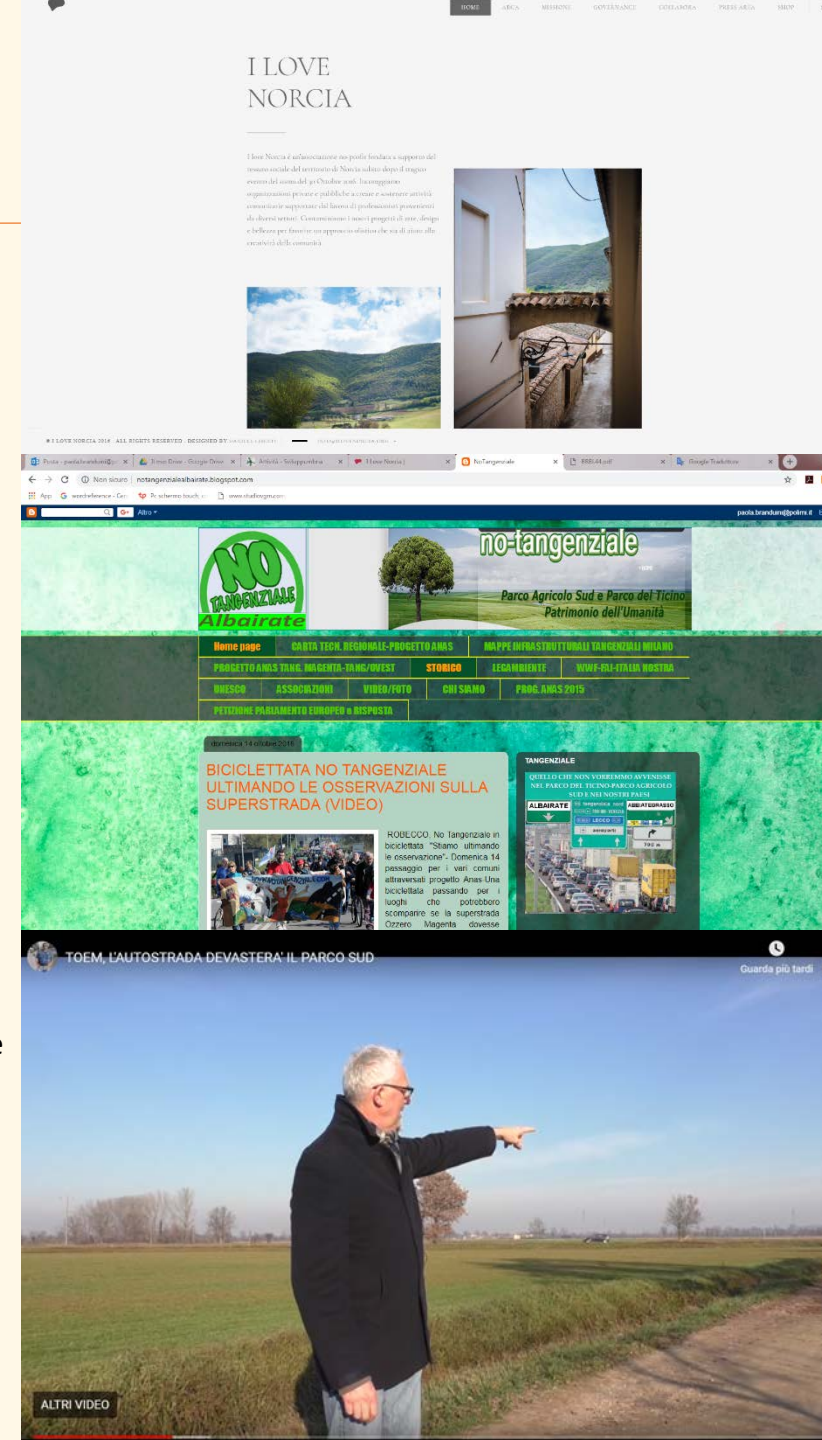
About their urban and rural landscape heritage trough interview to local institution, private stakeholders and a sample of farmers, inhabitants, etc

collect inhabitant's perception

- For Norcia: perception about institution role before and after the earthquake
- For Ticino: perception of institution role about new infrastructures project

3. Assessment/evaluation

Analyse collected data following defined indicators: institutions involvement; single or network initiatives; communication tools...



Expected results

For the scientific community

- Find best practices related to participation in cultural heritage preservation and enhancement
- Find best practises of community resilience after catastrophic events via cultural heritage preservation

For the local community

- Enhance cultural heritage attachment as a tool for implementing community resilience
- Implement initiatives for strengthening people engagement in cultural heritage preservation

Thank you for your attention!