



HERIWELL

Cultural Heritage as a Source of Societal Well-being in European Regions

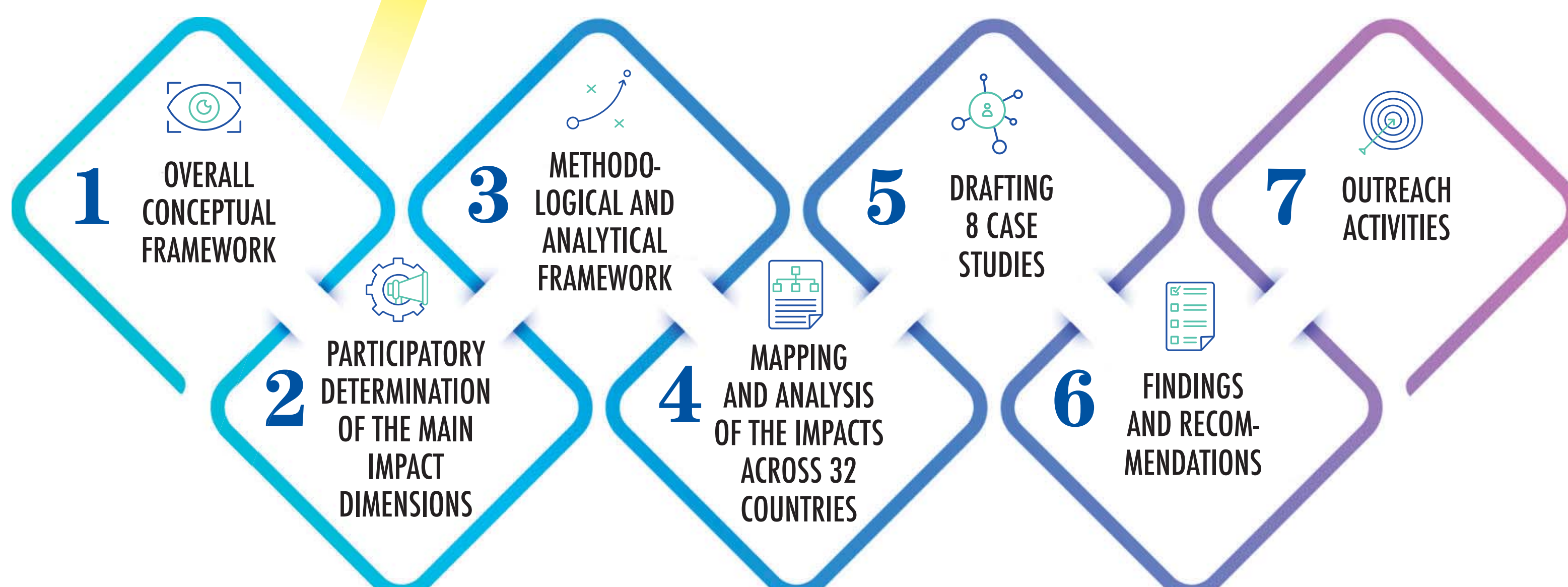
Goals

To develop a pan-European methodology and a territorial analysis of impacts of tangible and intangible cultural heritage that can be associated with societal well-being

Research questions

- 1 How can the societal impact of cultural heritage be defined?
- 2 How to measure this impact?
- 3 What disparities exist among territories and for different stakeholders (residents, tourists, and migrants)?
- 4 How to compare the impacts across different EU regions?
- 5 What are the impacts of EU heritage investments on societal well-being?
- 6 To what extent does the digitalisation of cultural heritage influence the well-being?
- 7 How Covid-19 has changed the role of digitisation?

Project's overview



Period April 2020 – April 2022
Contacts dissemination@heriwell.eu
www.espon.eu/HERIWELL