

"There is a moment when the journey that has begun can no longer be interrupted, we run towards a frontier, we pass through a mysterious door and wake up on the other side, in another life."
Isabel Allende

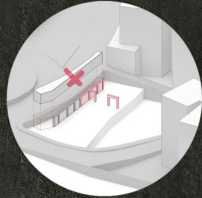
DUCTILITY IS IN THE MEMORY
"Student House between memory and future" - Ten years of L'Aquila earthquake

L'AQUILA - April 6 2009 - h 3.32



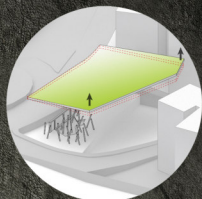
TRACES

Preservation and enhancement of the pre-existence as a trace of the past and starting point of the ideation process, through the excavation of the ground behind Via XX Settembre, aimed at creating a place of reflection and solitude.



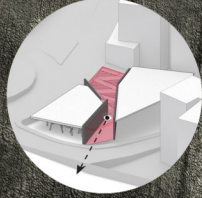
NATURAL ARTIFICIE

Green extension of Via XX Settembre on the study area, designed as a surface with the intrinsic vitality belonging to a natural organism. It is supported by a forest of vertical elements that recall the sense of instability, partly emerging from a bed of disintegrated material, intended as the pulverization of the certainties of life.



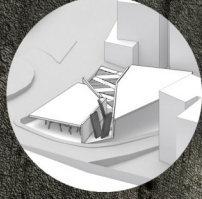
TRANSITION

Fracture in the ground that marks the boundary between the place of memory and the place of life, identifying trace of a system that witnesses the history of events: Spatial delineation of the path down to the entrances.



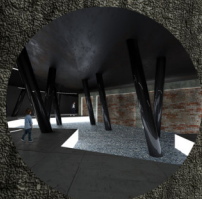
EMPATHY

Large, rooming elements, which seem to want to collapse to the ground as if they were frozen in a condition of imminent cinematoform, invite the visitor to immerse themselves in an emotional journey, flooded with contrasting sensations.



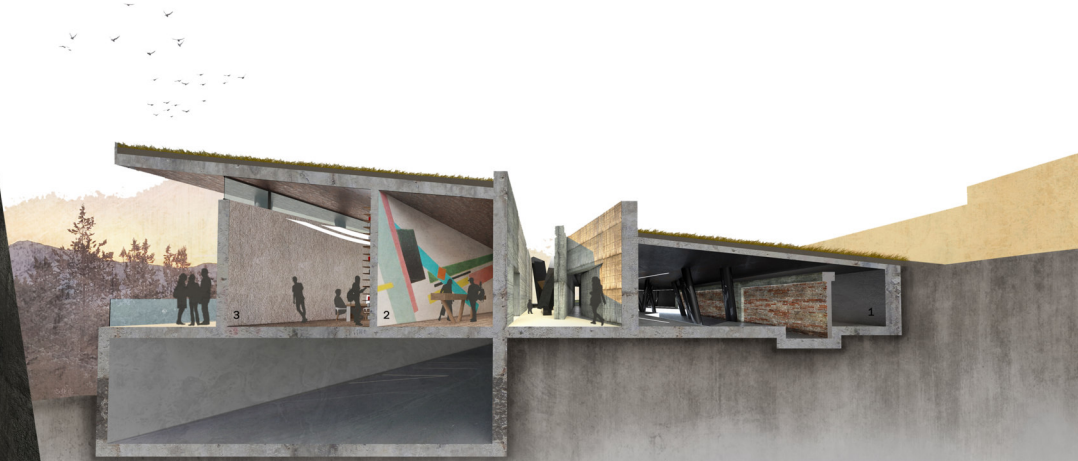
MEMORY

The glossy, black surface treatment of the column captures depth with the reflection of the measured lighting of the room. The room is dominated by the presence of the remains of the student's house building, severely damaged and highlighted by a lowering of the floor, which houses rubble.



FUTURE

"I have felt better just seeing a glimpse of sunset over the valley. Because leaving the hall I find myself between very high, black, shiny walls, in which I see myself reflected. I feel oppressed. Crushed. I cannot do anything about it. But the reflection of the sun on the next wall pushes me to continue. And here I am on that sunset."

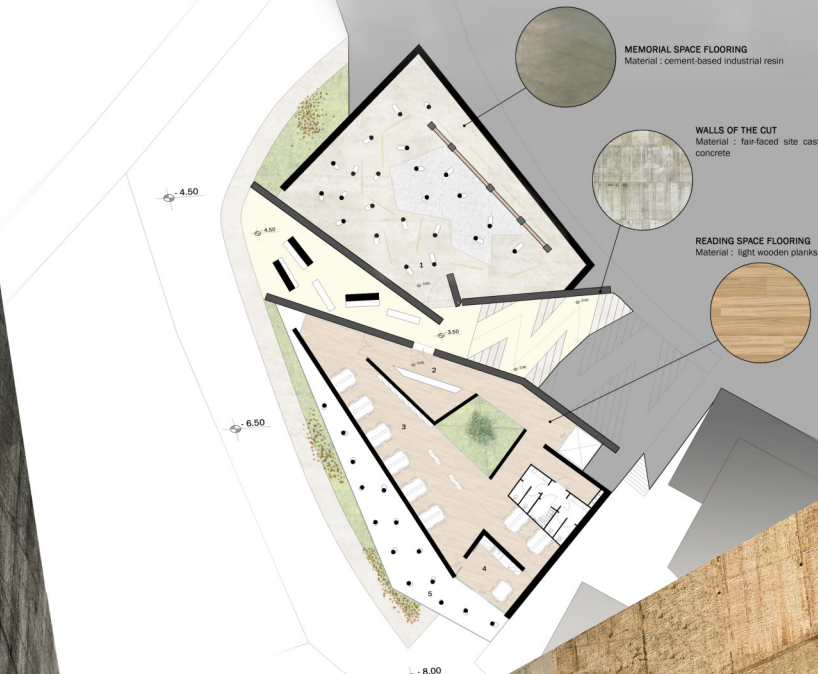


SECTION

PLANS -2,30 m

1:200 N

LEGEND : 1. Memorial space 3. Reading room 5. Terrace
2. Foyer 4. self-managed dining room



MEMORIAL SPACE FLOORING
Material : cement-based industrial resin

WALLS OF THE CUT
Material : fair-faced site cast concrete

READING SPACE FLOORING
Material : light wooden planks

